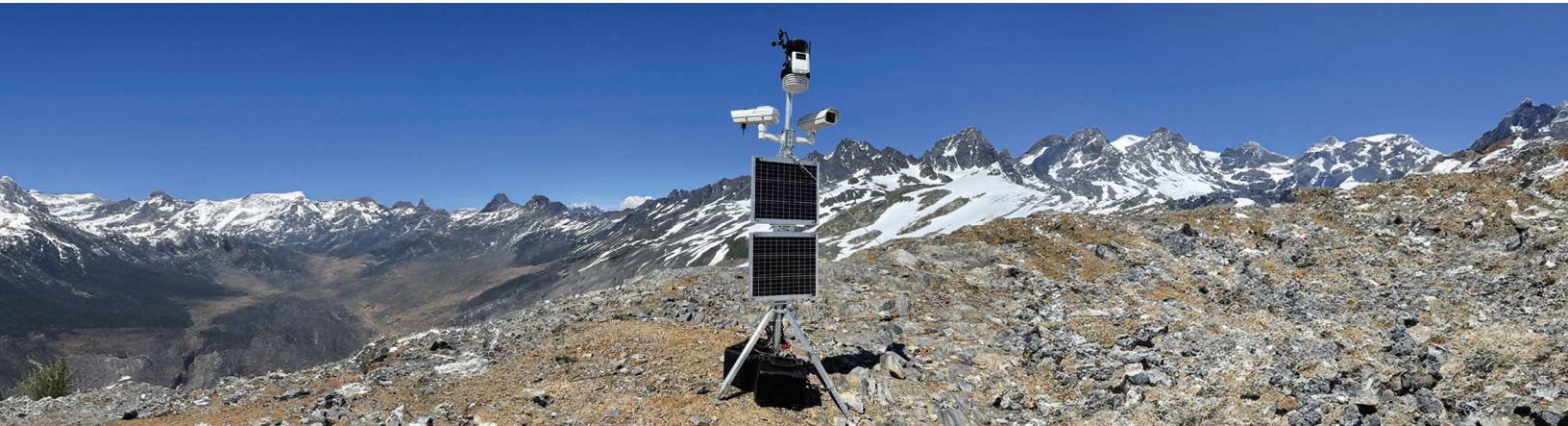


# Nupoint Systems Cameras and Davis Vantage Pro2™ Weather Stations Protect Pilots at Remote B.C. Mine



## Enabling mining operations in the face of variable weather

### OVERVIEW

The Galore Creek Project within the Tahltan Territory in Northwest British Columbia was approved in 2007, but its mining operation never got off the ground. More than fifteen years later, the Galore Creek Mining Corporation is working in alignment with Tahltan communities and values to explore the feasibility of modernizing the project and submitting for regulatory reapproval. Its pre-feasibility study (PFS) required creating, supplying, and operating a camp near the site with up to 150 temporary residents that would be accessible primarily by helicopter from an airstrip 85 kilometers away. The supply routes to the camp and mine feature highly variable weather and poor visibility, which posed a major safety threat to helicopter pilots and, by extension, the success of the entire project.

## Overcoming geographic & weather challenges

Veritas Aviation was hired to handle aviation logistics and safety to and from the camp by Galore Creek Mining Company. Because of the adverse weather conditions in the region, which necessitated low level flying, Veritas turned to another BC-based business, Nupoint Systems, to provide pilots and dispatchers with critical up-to-date weather information for helicopter pilots. Nupoint's systems are used to keep pilots, passengers, and cargo safe and eliminate aborted attempts to fly, which saves Galore Creek time and money. The team required a solution that would:

- 1** **CONNECT PILOTS WITH ACCURATE WEATHER INFORMATION**
  - Provide accurate visual and numerical weather information
  - Enable confident navigation
- 2** **PROVIDE NEAR-REAL-TIME DATA FROM EXTREMELY REMOTE AREAS**
  - Provide photographic and weather station data every 15 minutes or on demand 24/7
  - Work exceptionally far off the grid
- 3** **STAND UP TO RUGGED DEPLOYMENT CONDITIONS**
  - Operate under harsh outdoor weather conditions (-40 °F to +122 °F, -40 °C to +50 °C)
  - Withstand seven-month deployments in rural British Columbia
- 4** **LOW POWER CONSUMPTION**
  - Use a 100Ah battery with a 50-Watt solar panel
  - Draw minimal power while performing reliably



### MEET NUPOINT SYSTEMS

Nupoint Systems is the leading provider of remote satellite camera systems designed to monitor weather conditions and climate changes in remote areas. Nupoint's satellite camera systems enable customers to access critical data, at predetermined time intervals, effortlessly 24/7/365 from remote locations utilizing its core two-way satellite transceiver technology and incorporating cameras, weather stations, and data sensors. Nupoint joined the extended AEM family as a Davis Instruments partner in 2023. Learn more at [www.nupointsystems.com](http://www.nupointsystems.com)



We were confident our Nupoint satellite camera system would provide images of weather conditions along the 85 km travel route from Bob Quinn Lake to the Galore Creek Mining Camp. However, working with the Veritas Aviation crew, we identified that the helicopter pilots also needed real-time windspeed and precipitation information. Enter the Vantage Pro2, which connects easily to the Nupoint camera, was extremely easy to configure, and provided the critical information required to make go/no-go decisions.



— Tony Herunter,  
Director of Sales, Nupoint Systems

# The Solution: Nupoint camera pods with Davis weather stations

Nupoint installed six tripod-mounted cameras along the treacherous flightpath up the Galore Valley. Each installation includes two cameras and provide pilots and dispatchers with crucial visual intelligence and wind/precipitation readings at key places along the route so they can know when to fly, when to stay on the ground, and when to adjust.



### NUPOINT SATELLITE CAMERA SYSTEMS

Nupoint's rugged turnkey satellite cameras are configured to deliver up-to-date photos of weather conditions.



### VANTAGE PRO2 WEATHER STATIONS

Davis' versatile station offers all the weather sensors and compatibility Nupoint needs to provide full localized weather reports for each installation.

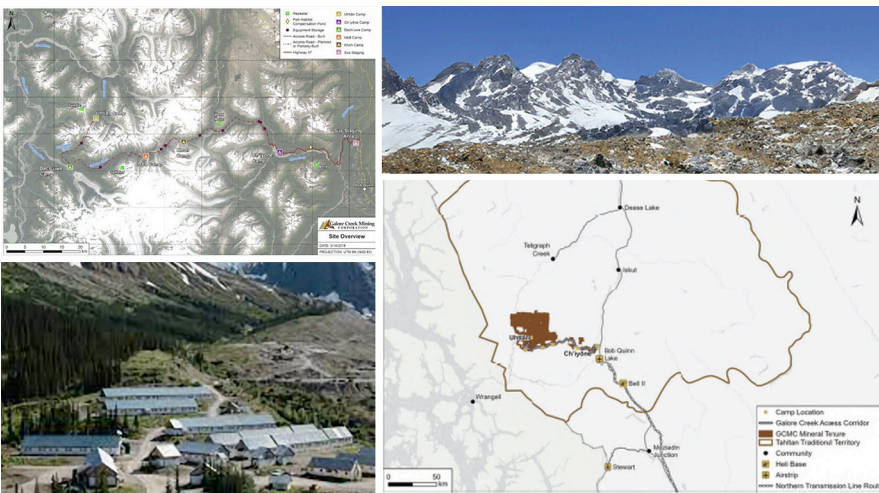


### SATELLITE DATA TRANSMISSION

Nupoint's satellite transceiver enables 24/7/365 access to camera and weather station, despite the remote and extreme conditions.

## Weather resilience in action for Galore Creek Mining

Overall, the implementation of the Nupoint satellite camera systems and Davis Vantage Pro2 weather stations at the Galore Creek project has improved the planning and management of helicopter activities, resulting in a safer, more efficient program. The learning curve for new pilots supplying the camp area and supporting the mine has been flattened, and daily decisions around scheduling and safety have been simplified.



### WHY WORK WITH AN AEM PARTNER?

Nupoint Systems, the Galore Creek Mining Company and Veritas Aviation's partner throughout this project, is just one member of a vast network of international partners and resellers that support the AEM family of brands across the world. AEM brands and our partners empower communities to survive – and even thrive – in the face of today's escalating environmental risks.

If you're wondering what sets AEM, our family of brands, and our partner network apart from the rest of the crowd, it all comes down to three things:

### PERSONALIZED WEATHER MONITORING SOLUTIONS

AEM, our family of brands, and our international partner/reseller network are all proud to believe in customer-centric solutions that are scaled to your needs.

### WORLD-CLASS HARDWARE & CUTTING-EDGE SOFTWARE

The AEM family of brands has the ideal station, sensor, data logger, or interpretative software platform for any use case, application, deployment, or budget.

### LOCAL SUPPORT & EXPERTISE ACROSS THE GLOBE

We don't try to support the whole world from a U.S. office; instead, we maintain a truly global network of configuration, enablement, and support experts.