

LT1 - Cell Logging Transceiver



Key Applications:





- Mesonet weather monitoring
- Water quality monitoring
- Water flow and flood monitoring
- Emergency management

Compact, IoT connected, and rugged telemetry

The LT1 is an IoT-connected, compact logging transceiver which collects, stores, and transmits real-time data and alerts based on your custom environmental parameters. It features reliable cellular 4G connectivity to access data remotely. Built for rugged climates, the LT1 enables a smart, secure solution designed to improve response time when dangerous environmental conditions emerge.



BEST-IN-CLASS FEATURES

-  Bi-directional communication to remotely or automatically trigger actions within the system
-  Rugged design includes conformal coating to protect from moisture
-  Local storage ensures data integrity
-  Employs the MQTT protocol for lightweight, scalable, and secure communication

Specifications

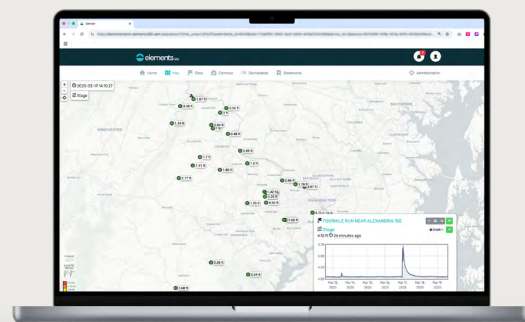
LT1-CELL	
Dimensions	135mm x 135mm x 40mm (5.3" x 5.3" x 1.6")
Weight	400g (0.88lbs)
Operating Temp range	-40°C to +65°C (-40°F to 149°F)
Humidity	0-95% RH
Supply voltage	9.6 to 20V
Current Consumption @13.5Vdc	16mA (active) ¹
Local Control	Bluetooth Low Energy (BLE)
Local I/O	SDI-12 Rain gauge counter NMEA
Certifications	CE, FCC, IC
Telemetry	4G LTE
What's Included	4GB SD Card, Cell/GPS antenna



¹Based on single parameter collection and 15 min transmissions



AEM Elements® 360 gives you a powerful way to visualize and organize data from your environmental monitoring systems. With customizable dashboards, maps, and charts, automated alerts, and seamless collaboration tools, it delivers the insights you need to make confident decisions.



FEATURES AND BENEFITS:

- Connect supported MQTT-based stations to a powerful and smart Industrial Internet of Things (IoT) network
- Create alerts and actions within your network so it reacts automatically and intelligently
- Once a bi-directional station is installed, manage it from the comfort of your office, or on the road with your smartphone or tablet